

Show Me Tell Me Questions

1 - Show me how you would check that the direction indicators are working.

Apply the indicators or hazard warning switch and check functioning (LOOK at) all indicators. (may need to switch ignition on, do not start engine)

Tell me how you would check that the brakes are working before starting a journey.

Brakes should not feel spongy or slack. Brakes should be tested as you set off. Vehicle should not pull to one side

2 - Identify where the windscreen washer reservoir is and tell me how you would check the windscreen washer level.

Identify reservoir and explain how to top up level

Show me how you would check that the brake lights are working on this car. (I can assist you, if you need to switch the ignition on, please don't start the engine)

Operate brake pedal, make use of Examiner in this case!! Could use reflections in windows, garage doors, etc or ask someone to help. (switch ignition on, do not start engine)

3 - Show me / explain how you would check that the power assisted steering is working before starting a journey.

If the steering becomes heavy the system may not be working properly. Before starting a journey two simple checks can be made. Gentle pressure on the steering wheel, maintained while the engine is started, should result in a slight but noticeable movement as the system begins to operate. Alternatively turning the steering wheel just after moving off will show that it is working.

Tell me where you would find the information for the recommended tyre pressures for this car and how tyre pressures should be checked

Look in the Manufacturer's guide. Use a reliable pressure gauge, check and adjust pressures when tyres are cold, don't forget spare tyre, remember to refit valve caps

4 - Show me how you would check the parking brake (handbrake) for excessive wear, make sure you keep safe control of the vehicle

Apply footbrake firmly. Demonstrate by applying parking brake (handbrake down and up again) so that when it is fully applied it secures itself, and is not at the end of the working travel

Identify where the windscreen washer reservoir is and tell me how you would check the windscreen washer level.

Identify reservoir and explain how to check level

5 - Open the bonnet, identify where you would check the engine oil level and tell me how you would check that the engine has sufficient oil.

Identify dipstick / oil level indicator, describe check of oil level against the minimum/maximum markers. (Pull out dipstick, wipe with a rag, put it all the way back in, and then check oil level on min/max indicator)

Tell me where you would find the information for the recommended tyre pressures for this car and how tyre pressures should be checked.

Look in the Manufacturer's guide. Use a reliable pressure gauge, check and adjust pressures when tyres are cold, don't forget spare tyre, remember to refit valve caps

6 - Open the bonnet, identify where you would check the engine coolant level and tell me how you would check that the engine has the correct level.

Identify high/low level markings on header tank where fitted or radiator filler cap, and describe how to top up between Min/Max.

Tell me how you make sure your head restraint is correctly adjusted so it provides the best protection in the event of a crash

The head restraint should be adjusted so the rigid part of the head restraint is at least as high as the eye or top of the ears, and as close to the back of the head as is comfortable. N.B. Some restraints might not be adjustable

7 - Open the bonnet, identify where the brake fluid reservoir is and tell me how you would check that you have a safe level of hydraulic brake fluid.

Identify reservoir, check level against high/low markings

Tell me how you would check the tyres to ensure that they have sufficient tread depth and that their general condition is safe to use on the road.

1.6mm of tread depth across the central $\frac{3}{4}$ of the breadth of the tyre and around the entire outer circumference. No cuts or bulges. (See Diagram)

8 - Show me how you would check that the horn is working (off road only).

Check is carried out by using control – push it! (turn on ignition if necessary)

Tell me how you would check the tyres to ensure that they have sufficient tread depth and that their general condition is safe to use on the road.

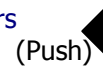
1.6mm of tread depth across the central $\frac{3}{4}$ of the breadth of the tyre and around the entire outer circumference. No cuts or bulges. (See Diagram)

9 - Tell me how you would check that the brakes are working before starting a journey.

Brakes should not feel spongy or slack. Brakes should be tested as you set off. Vehicle should not pull to one side.

Show me how you would clean the windscreen using the windscreen washer and wipers

Operate control to wash and wipe windscreen (turn ignition on if necessary)



10 - Tell me how you would check that the headlights & tail lights are working. (No need to exit vehicle)

EXPLAIN that I (turn ignition on) turn the lights on, then walk round vehicle. (As this is a "Tell Me" question, there is no need to physically check the lights.)

Show me how you would set the demister controls to clear all the windows effectively, this should include both front and rear screens

Set all relevant controls including; fan, temperature, air direction / source and heated screens to clear windscreen and windows. Engine does not have to be started for this demonstration

11 - Show me how you would switch on the rear fog light(s) and explain when you would use it/them. (No need to exit vehicle)

Operate switch (turn on dipped headlights and ignition if necessary). Check warning light is on. Explain use of headlights or front and rear fog lights when visibility is seriously reduced, --- less than 100 m. (See Diagram)

Tell me how you make sure your head restraint is correctly adjusted so it provides the best protection in the event of a crash

The head restraint should be adjusted so the rigid part of the head restraint is at least as high as the eye or top of the ears, and as close to the back of the head as is comfortable. N.B. Some restraints might not be adjustable

12 - Show me how you would check that the brake lights are working on this car. (I can assist you, if you need to switch the ignition on, please don't start the engine)

Operate brake pedal, make use of Examiner in this case!! Could use reflections in windows, garage doors, etc or ask someone to help. (switch ignition on, do not start engine)

Tell me how you would check that the headlights & tail lights are working. (No need to exit vehicle)

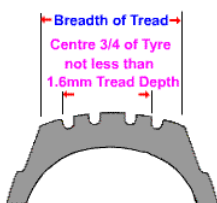
EXPLAIN that I (turn ignition on) turn the lights on, then walk round vehicle. (As this is a "Tell Me" question, there is no need to physically check the lights.)

13 - Show me how you switch your headlight from dipped to main beam and explain how you would know the main beam is on whilst inside the car

Operate headlight switch (with ignition on if necessary), check with main beam warning light (BLUE) on dashboard. THEN TURN IT OFF!

Tell me how you would know if there was a problem with your anti lock braking system (ABS)

Warning light should illuminate on dash if there is a fault with the anti lock braking system (Point to it)



Tyre



Fog / Handbrake / Hazard light (examples)